

Render to
Reality



**The Swift, Sturdy, Innovative
Construction Approach.**



Accredited by
Ministry of Housing
& Urban Affairs
Government of India



GLOBAL
HOUSING
TECHNOLOGY
CHALLENGE INDIA

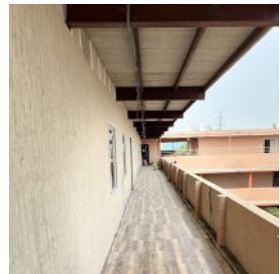
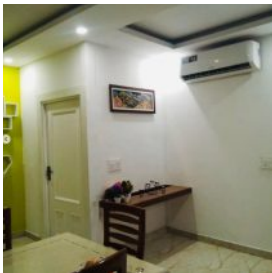
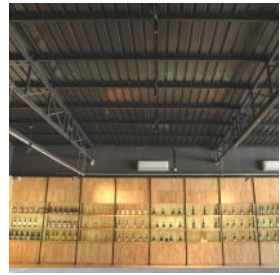


Building Materials & Technology
Promotion Council



CK BIRLA GROUP







About Us

Welcome to **Simplyprefab**, a construction company in India specializing in designing and constructing prefabricated modular homes.

Our sustainable and energy-efficient building solutions include:

Best Pre-engineered steel buildings.
Durable Sandwich panel structures.
Sustainable Conversions.

We take a client-centric approach by offering the best quality and complete prefab construction solutions, including customization and turnkey solutions.

01

Savings & Rapid Construction



Cost: Light-weight, therefore results in structural savings up to 20%.
Time: construction that is three times quicker than that of conventional brick-and-mortar buildings. Labour: Pre-cured ready-to-use, therefore eliminates on site curing.

02

Service & Quality Assurance



Assurance of superior quality in both materials and execution services, supported by rigorous inspections and established quality assurance protocols.

03

Strength: Resistant To Earthquakes & Wind



Simplyprefab structures exhibit an exceptional strength-to-weight ratio, providing them with significant resistance to wind forces. They are capable of enduring wind speeds of up to 240 km/h. Solid & Sturdy: Cement-based panels with compressive strength with high axial compression & bending.

04

Space & Geometric Precision



Thinner Walls: Provides additional carpet area up to 5%. The characteristics of Steel construction allow for the attainment of tolerances as precise as 0.5 mm, resulting in efficient and accurate building processes.

05



Sustainable & Eco-friendly

Saves resources: Cement and sand are not required during construction or finish. Environmental benefits across various life cycle categories are observed when compared to traditional structures, notably including reduced consumption of water & material resources.

06



Reduced Weight, Enhanced Recyclability

Simplyprefab is approximately 50% lighter than conventional buildings and utilizes steel that is entirely recyclable & reusable. The unique tongue & groove joint makes it easy to install and uninstall.

07



Termite Resistance

steel-intensive construction method, providing enhanced protection for the structures against termites and insect infestations, in contrast to wood-based construction.

08



Safe With Fire Resistance

Simplyprefab walls are certified by NABL approved lab to withstand fire for up to 90 minutes. Toxic emissions: None.



• Types of Application

Simplyprefab is an excellent option for individuals seeking to construct robust, multi-storey structures in a timely manner. Suitable locations for such applications include:



Partitions

Offices, malls, educational institutions, hotels/ restaurants, housing residential, Govt./defence, industrial & infrastructure, textile units.

Prefab Structures

Accommodation units, site offices, security & store rooms, warehouse/ godowns, schools, army barrack, low-cost housing.

Mezzanine Flooring

Industrial/SEZ, warehouse/godowns, storerooms, shopping malls, Govt./defence, etc.

Cladding

Shopping malls, school/college/ university, duct covering, site offices & administration offices, industrial.

Boundary / Fencing

Residential, commercial, Govt./defence etc.

Fire Separation Walls

Shopping malls, hotels, stair case enclosures, industrial.

ELEMENTS & TECHNICAL DETAILS STEPS

Step 1:

Understanding your requirements



- Provide your floor plan, or if necessary, we can develop a 3D plan tailored to your needs.
-

Step 2:

Foundation & Plinth



- Strengthened Concrete Base & Beams.
 - Plinth Fillings & Compaction Processes.
 - Concrete Flooring Accompanied by Finishing Touches.
-

Step 3:

Steel Structure



- highest quality steel checks.
 - High-strength steel in accordance with structural specifications.
 - Structural deformation of the building.
-

Step 4:

Walls 2", 3" & 4" Drywall panels



- The construction consists of high-density fiber cement board positioned on the interior and exterior.
- The upper layers are composed of gypsum boards.
- The finishing touches include exterior paint and wallpaper.

ELEMENTS & TECHNICAL DETAILS STEPS

Step 6:

Roofing & Flooring



- 2" Aerocon panels will be used as a slab.
 - Flat roofing deck along with concrete and waterproofing on the upper surface.
 - Flooring Boards, Tiles or Laminated wooden flooring.
-

Step 7:

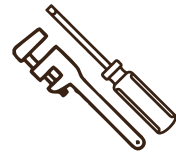
Doors & Windows Installation



- UPVC Sliding Windows.
 - UPVC Doors or Flush Doors.
-

Step 8:

Electrical & Plumbing Installation



- Insulated wiring , distribution box and panel.
 - electrical fittings and switches.
 - CPVC plumbing line, and sanitary fittings.
-

Step 9:

Handover



Earthquake Resistance with Dry wall panels



Original Image | Built with Birla Aerocon Panels - Gurgaon

Engineered for Superior & Durable Construction. Solid Wall Panels, Perfect for wall partitions.

Wall Panels are a revolutionary product in the construction industry, offering a multitude of benefits in just one versatile package.

These panels, made from a blend of cement, fly ash, and fibers, have gained immense

popularity for their remarkable properties. In a fast-paced construction industry that values efficiency, strength, and sustainability, Wall Panels have emerged as a game-changer.

Their combination of durability, insulation, soundproofing, fire resistance, and design flexibility makes them an ideal choice for a wide range of projects, ensuring success in every construction endeavor.

• 100+ Projects Completed

- Multi-Storey Buildings
- Residential Building
- Manufacturing Facilities
- Educational Institutions
- Warehouses
- Commercial Projects & more





Crack free, Smooth & Seamless Interior walls

Aesthetically, Dry Wall Panels are adaptable to various design preferences, making them suitable for diverse architectural styles.

Furthermore, these panels are environmentally friendly, utilizing fly ash and promoting sustainability.

Beyond their strength, these panels excel in thermal

insulation, contributing to energy efficiency by maintaining comfortable indoor temperatures.

They also offer impressive soundproofing capabilities, creating peaceful indoor environments. Safety is paramount, and these panels are highly fire-resistant, providing crucial protection in emergencies.

Simplyprefab walls are designed to bear weight, guaranteeing both strength and longevity in every construction project.



Tongue & Groove Technology

Bear loads of up to 200 kg





Explore an all-time alternative & perfect dry walling solution from Simplyprefab





Steel fabrication is a pivotal process in contemporary construction and engineering, serving as the backbone of modern infrastructure development. It involves the transformation of raw steel into various structural components and products that are integral to the construction of buildings, bridges, machinery, and more. This versatile and essential industry plays a crucial role in shaping the world around us.

Strength and Durability: Steel's inherent strength and durability make it a preferred choice for structural components. Fabricated steel structures can withstand extreme loads, harsh weather conditions, and the test of time, ensuring long-lasting, reliable infrastructure.

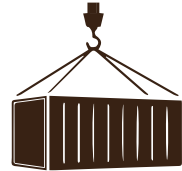
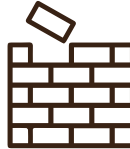
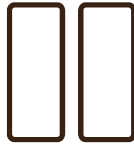
Versatility: Steel fabrication encompasses a wide range of

applications. From structural beams and columns in skyscrapers to intricate machinery components, steel's adaptability and versatility allow it to meet the diverse needs of industries such as construction, automotive, and manufacturing.

Precision Engineering: Steel fabrication demands precision & expertise. Skilled fabricators employ cutting-edge technologies like CNC machining, laser cutting, and robotic welding to ensure accuracy in measurements and tight tolerances, resulting in high-quality products.

Sustainability: Steel is a highly recyclable material, making it an environmentally responsible choice. The recycling process reduces energy consumption and greenhouse gas emissions, aligning with sustainable construction

- **Simplyprefab Drywall Construction Vs Traditional Build & Containers Cabins In Market**



Feature	Drywall Build	Traditional Build	Containers
Building Material	Built with high Quality Steel	Built with Sand, Cement, Brick, Water	Repurposed shipping containers
Speed	3x faster construction and installation	Linear construction one step at a time	Time intensive
Custom	Customisable size, layout and aesthetics	Structure is fixed for life	Size limited by container dimensions
Durability	Meets all standards of construction & is highly durable	Quality concerns due to involvement of multiple contractors	Needs heavy maintenance
Efficiency	Energy usage is less due to thermal & noise insulation	Large quantity of construction waste	Not energy efficient
Construction	Prefabricated off-site & installed on-site	Built on-site	Require extensive on-site work

simplyprefab

@simplyprefab · 37K+ followers · 500+ posts

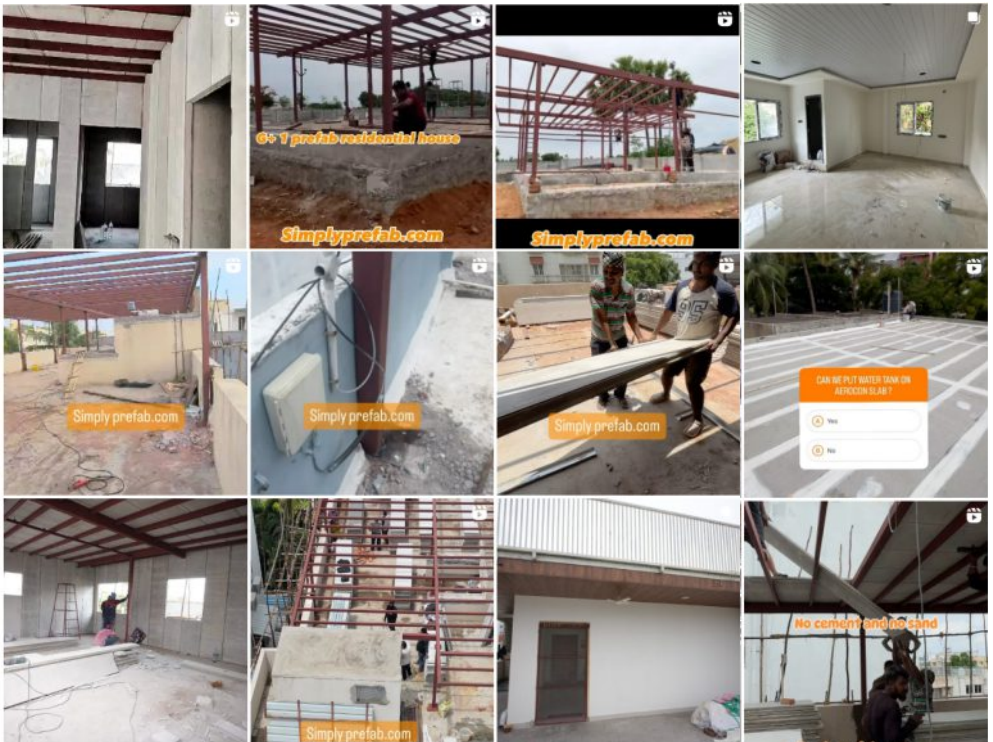


Click on images to watch videos
www.instagram.com/simplyprefab



Scan QR to watch videos

As a premier affordable Prefab building & House construction in India, we specialize in delivering top-notch, custom-designed, & budget-friendly structures.



simplyprefab

@simplyprefab · 12K+ subscribers · 1K+ videos



Scan QR to watch videos



Click on images to watch videos
www.youtube.com/@simplyprefab



Revolutionizing Construction:
Unveiling the Power of...
979 views · 3 months ago



Revolutionizing Construction:
Unveiling the Power of...
2.2K views · 4 months ago



Revolutionizing Construction:
Unveiling the Power of...
1.5K views · 4 months ago



Transforming Spaces: Penthouse
Construction Revealed
676 views · 5 months ago



Prefab roof top extension- Best
option for construction
2K views · 5 months ago



||Prefab Roof Tops Expert Insights
Revealed||Prefab Roof Tops The...
785 views · 5 months ago



Revolutionizing Construction:
Unveiling the Power of...
5K views · 5 months ago



Revolutionizing Construction:
Unveiling the Power of...
5.5K views · 5 months ago



Top 10 Secrets About Prefab Pent
House
241 views · 10 days ago



G+1 residential prefab house
380 views · 13 days ago



Prefab construction FAQ's
996 views · 4 weeks ago



Revolutionizing Construction:
Unveiling the Power of...
484 views · 1 month ago



Revolutionizing Construction:
Unveiling the Power of...
849 views · 2 months ago



Revolutionizing Construction:
Unveiling the Power of...
706 views · 2 months ago



Revolutionizing Construction:
Unveiling the Power of...
3.9K views · 3 months ago



Revolutionizing Construction:
Unveiling the Power of...
555 views · 3 months ago

• Our Services

The SimplyPrefab is a service provider for the design, manufacturing, and construction of Prefabricated buildings. For building construction, it primarily utilizes prefabricated Aerocon panels along with a steel structural frame.

Prefab Pent Houses

Prefab pent houses represent the epitome of modern luxury living, offering a unique fusion of architectural elegance and construction efficiency.

Turnkey Prefab Construction

It represents a transformative approach to building, offering a comprehensive and efficient solution that encompasses the entire construction process.

Birla Aerocon Wall panels

Birla Aerocon Wall Panels are a revolutionary product in the construction industry, offering a multitude of benefits in just one versatile package.

Water Proofing

SimplyPrefab takes a holistic approach to water proofing, addressing vulnerabilities from the ground up. Our expert team who work seamlessly together to ensure your property remains water-tight while maintaining its aesthetic appeal.

MEP Solutions

MEP (Mechanical, Electrical, and Plumbing) solutions are the essential lifeblood of modern buildings, encompassing the intricate network of systems that ensure functionality, comfort, and safety.

To know more about are services visit our website,

Book your Services Now & get a quote.

 www.simplyprefab.com/services

• Frequently Asked Questions (FAQ's)

Which type of steel is used by Simplyprefab while constructing a Prefab structure?

Simplyprefab uses highest quality steel of approved make in all projects. Simplyprefab is ISO 9001 certified and performs stringent quality checks.

What is the strength of steel used in Simplyprefab Prefab?

The grade of Primary members is 345 N/mm² and Cold Form members is 345 N/mm².

What is the life of a Prefab building? / strength of steel?

Simplyprefab buildings are designed for a structure life of 25 years. Proper maintenance as per Simplyprefab Maintenance Guidelines will ensure assured structural performance through building life.

Is Prefab lighter than conventional building?

Yes, Simplyprefab buildings are lighter than conventional buildings. They also tend to be durable. The ability to optimize structural elements enables significant reduction of steel consumption.

At what locations does Simplyprefab Industries offer Prefab solutions?

We offer Prefab construction solutions pan-India. Get in touch with us at +919014424242 to learn more.






Is Prefab lighter than conventional building?

Yes, Simplyprefab buildings are lighter than conventional buildings. They also tend to be durable. The ability to optimize structural elements enables significant reduction of steel consumption.

At what locations does Simplyprefab Industries offer Prefab solutions?

We offer Prefab construction solutions pan-India. Get in touch with us at +919014424242 to learn more.



Follow simplyprefab on:     

Scan to know more:



Prefabulos Homez LLP.
3rd floor Pillar No. 1630,
Apurupa Towers, 8-2-293/82/A
2nd, Rd Number 36, Jubilee Hills,
Hyderabad, Telangana 500034

 9014 42 42 42  www.simplyprefab.com  enquiry@simplyprefab.com